



JENNER WIND POWER PROJECTS

VIRTUAL OPEN HOUSE



**September 8, 2021
6:30PM – 8:00PM**

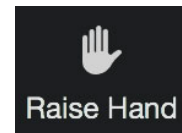
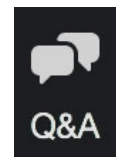


WELCOME AND HOUSEKEEPING

Have a Questions?



- [During the presentation](#) – Type your question in the **Question and Answer** box
- [During the Q&A Session](#) – Press the **Raise Hand** button to ask your question using your microphone or type your question in the **Question and Answer** box





AGENDA

- Team Introduction
- Overview of the Jenner Wind Power Projects
- Summary of Approvals and Permits
- Upcoming Construction Activities and Schedules
- Getting Involved with the Project
- Q&A
- Contact

TEAM INTRODUCTION

Potentia Renewables Inc. (PRI)

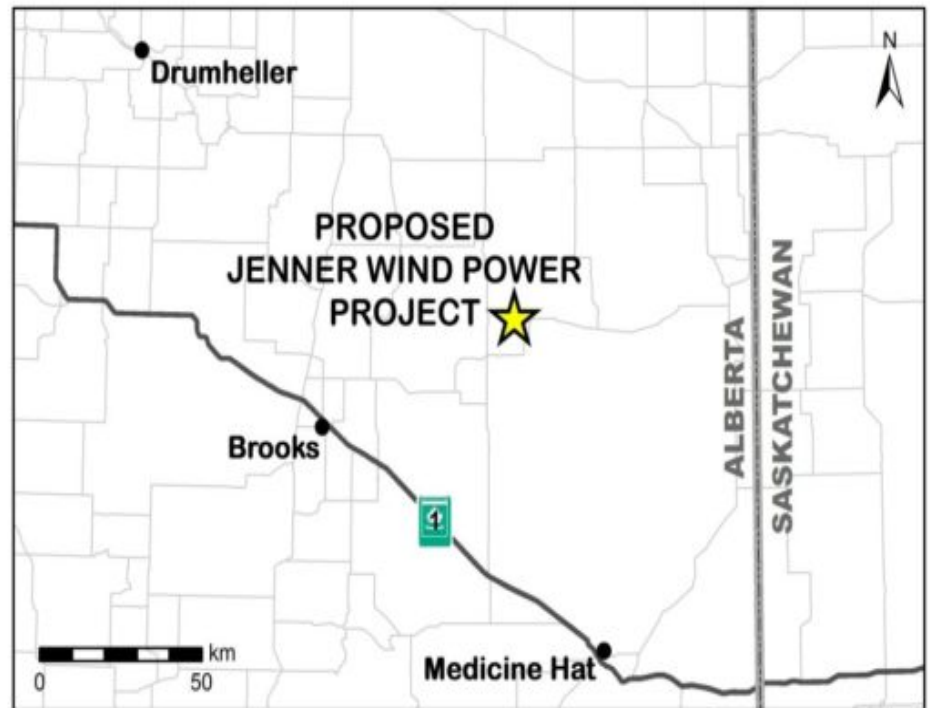
| | |
|---------------------------------|----------------------------------|
| Project Manager | Will Patterson |
| Construction Managers | Malcolm Blanchard Alex Lawson |
| Environment & Community Contact | Cathy Zhao |

Contractors

| | | |
|--------------------|--|-------------------------------|
| Borea Construction | Main Engineering, Procurement & Construction (EPC) Contractor | Maxime Cantin David Berube |
| Rising Edge | EPC Contractor | |
| PESCA | Environmental Monitors | Luc Prefontaine Mike Glab |
| AECOM | Community Liaison Committee / Community Consultation | Alicia Evans |

OVERVIEW OF THE JENNER WIND POWER PROJECTS

- The Jenner Wind Power Projects (Jenner Projects) are three electrical generation projects owned by PRI located near the town of Jenner:
 - Jenner Wind Power Project (JWPP) – 22 turbines and 122.4 MW
 - Jenner Wind Power Project (JWPP2) – 13 turbines and 71.4 MW
 - Jenner Wind Power Project (JWPP3) – 20 turbines and 109.2 MW
- The three Jenner projects share the same project boundary, as well as the following general infrastructure:
 - Halsbury 306S Substation
 - Transmission Line 949L
 - Jenner 275S Substation
 - Temporary laydown areas
 - Operations and Maintenance (O&M) building
- This open house will focus on the JWPP as construction of the JWPP2 and JWPP3 won't begin until 2022
- The anticipated commercial operation date for the JWPP is Q4 2022 – Q3 2023



OVERVIEW OF THE JENNER WIND POWER PROJECTS

Turbine Specifications

| | |
|------------------|----------------|
| Turbine Model | Enercon 5.X |
| Turbine Capacity | 5.49 - 5.56 MW |
| Tower Hub Height | 114 m |
| Rotor Diameter | 160 m |



Local Benefits

The Jenner Projects will benefit the local community in a variety of ways, including:

- Creation of up to 300 construction and 5-15 permanent local jobs in O&M
- Contract opportunities during construction in excavation and civil works, aggregate supply, etc.
- Contract opportunities for local businesses in snow clearing, road maintenance, fencing, reclamation etc.
- Increased local spending on goods and services during project development, construction and operational phases
- Community funding commitments starting from operation of the Projects

SUMMARY OF APPROVALS AND PERMITS - JWPP

Alberta Utilities Commissions (AUC) Approvals

- Collector Substation “Halsbury 306S” AUC Permit & Licence
- Transmission Line “949L” AUC Permit & Licence
- JWPP AUC Power Plant Approval



Relevant studies included in the most recent AUC submissions:

- AEP Referral Report Amendment Letter for environmental considerations
- Participant Involvement Program (consultation) Report
- Historical Resources Act Clearance update
- Noise Impact Assessment update (confirmed compliance with AUC Rule 012: Noise Control)
- Shadow Flicker Assessment update
- Updated maps and turbine locations



SUMMARY OF APPROVALS AND PERMITS – JWPP

Environmental



- The JWPP has completed all the wildlife surveys required by Alberta Environment and Parks (AEP), including:
 - Migratory bird and bat surveys
 - Sensitive amphibian surveys
 - Breeding bird surveys
 - Soil and vegetation surveys
 - Wetland identification
- Specific surveys are repeated every two years until COD and results are submitted to AEP.
- The JWPP provides an update to the AEP each time changes are made to the project. The latest update was provided to AEP in February 2021.
- The AEP does not provide an approval but assesses the risk a project has on the environment and whether appropriate mitigation measures have been provided to mitigate the identified risks. The AEP issues a Referral Report which is considered by the AUC in its decision for approval.



SUMMARY OF APPROVALS AND PERMITS – JWPP

Environmental cont...



- A Construction Environmental Protection Plan will be followed by EPCs.
- Environmental Monitors during construction to advise and monitor the EPCs, particularly within or near sensitive environmental features.
- The project has been carefully planned to reduce potential environmental impacts as much as possible. Examples include:
 - Avoiding construction on native grassland during breeding bird season to reduce disturbance
 - Specific mitigation and construction methods reviewed and accepted by the AEP for work on native grassland.
 - Special mitigation for work near amphibian wetlands
 - Avoiding construction near raptor nests during breeding season
- Notifications and permit applications will be submitted to and acquired from the AEP for the few locations where infrastructure crosses wetlands.
- Disturbed lands will be reclaimed after construction/operation per the Conservation and Reclamation Directive.
- Post-construction bird and bat mortality monitoring.

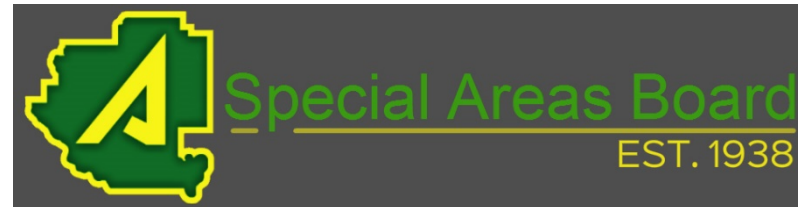
SUMMARY OF APPROVALS AND PERMITS – JWPP

Non-AUC Approvals

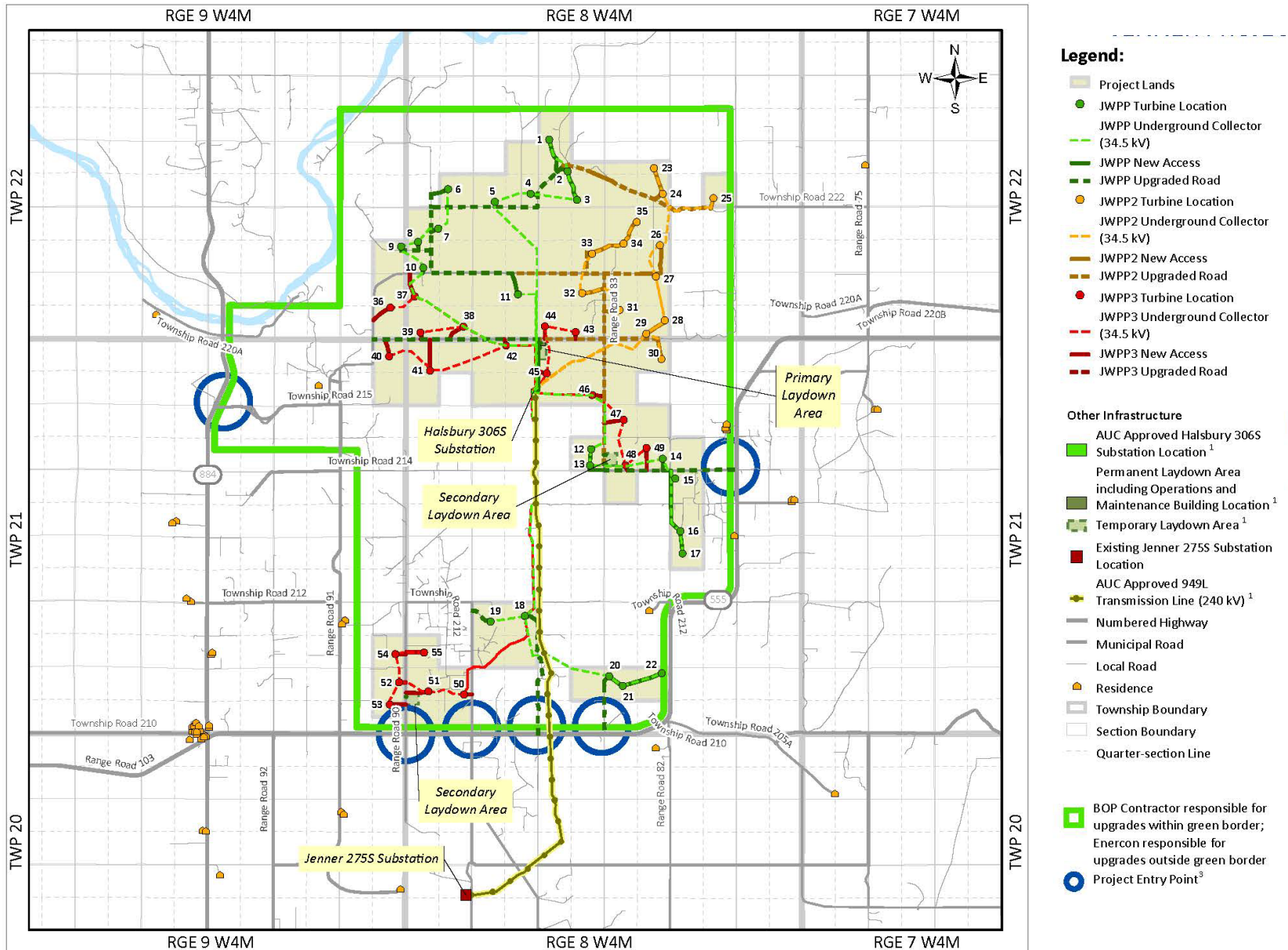
- Alberta Culture – Historical Resources Act Clearance
- Alberta Transportation – Roadside Development Permits and Utility Permits
 - Roadside development permits - required for structures within the interest area of provincial highways
 - Utility permits - required for utility (power line) placement within a highway setback
- Transport Canada – Aeronautical Assessment and Clearance
- Environment Canada – Weather Radar interference assessment
- NAV Canada and Department of National Defence

Municipal

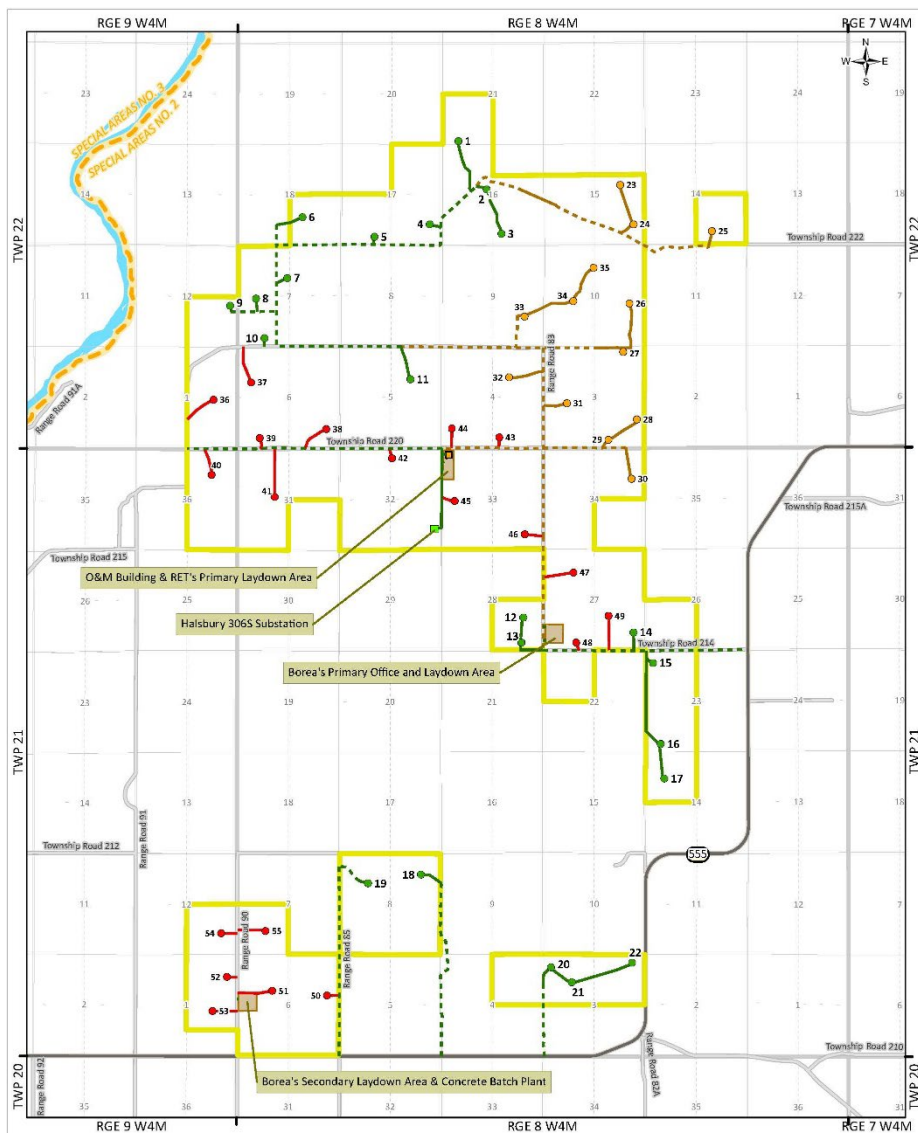
- We submitted the SAB2 Development Permit to amend the following:
 - Final turbine selection
 - Road improvement areas
- SAB 2 Road Use Agreement – currently under review
 - Access to use the road for hauling goods and equipment
 - Improvements to the existing road and construction of new roads



UPCOMING CONSTRUCTION ACTIVITIES AND SCHEDULE



UPCOMING CONSTRUCTION ACTIVITIES AND SCHEDULE



| Date | Construction Activity |
|---------------------------|--|
| September 2021 | Construction begins at JWPP: <ul style="list-style-type: none"> - Access roads - Road upgrades - Turbine pads |
| December 2021 | Construction stops for the year |
| Spring 2022 | Construction resumes at JWPP Construction begins for JWPP2 and JWPP3 |
| Winter 2022 – Spring 2023 | Anticipated commercial operation for the JWPP |
| Spring 2023 | Anticipated commercial operation for the JWPP2 and JWPP3 |

Legend

- Project Boundary¹
- JWPP Turbine Location
- JWPP New Access
- JWPP Existing Road to be Upgraded
- JWPP2 Turbine Location
- JWPP2 New Access
- JWPP2 Existing Road to be Upgraded
- JWPP3 Turbine Location
- JWPP3 Existing Road to be Upgraded
- JWPP3 New Access
- Halsbury 306S Substation Location²
- Permanent Laydown Area³
- Temporary Laydown Area³
- Municipal District and County Boundary
- Township Boundary
- Section Boundary
- Quarter-section Line
- Waterbody
- Numbered Highway
- Road



GETTING INVOLVED WITH THE PROJECT

Community Liaison Committee (CLC)

Become a CLC Member:

- The CLC is expected to consist of between 3 and 8 community members plus PRI representatives
- CLC members will be responsible for attending a total of 9 meetings between 2021 and 2024
- We're inviting individuals from the following groups to apply to the CLC:
 - Local residents, occupants and landowners within 2km of the Jenner project boundaries
 - Local businesses or industry representatives
 - Local social, community or environmental groups
 - Other interested parties
- If there aren't enough applicants for the CLC, PRI will host regular open houses, distribute newsletters, and/or provide information on the website to keep the community informed

Community Support Group (CSG)

- The CSG is a local group supportive of the Jenner projects, who will help PRI make decisions on distribution of the community fund
- CSG is looking for younger member(s) to join them (age 18+ to 35), email info@jennerwind.com if you're interested!

Borea Construction

- Various job opportunities are available with Borea during the construction stage of the projects
- If you're interested, please contact Maxime, our Borea representative directly at: maxime.cantin@boreaconstruction.com

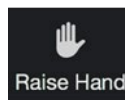
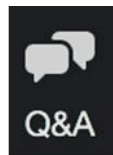


QUESTION AND ANSWER PERIOD



Type your question in the
Question and Answer box

Press the Raise Hand
button to ask your question
using your microphone



Email your questions to:

info@jennerwind.com



THANK YOU FOR ATTENDING THE OPEN HOUSE

For general information or questions, please contact us at: info@jennerwind.com

For more information on the CLC or if you would like to become a CLC or CSG member, please contact Alicia Evans at alicia.evans@aecom.com

For an emergency construction issue, please contact one of our construction managers Malcolm Blanchard ([519-572-7397](tel:519-572-7397)) or Alex Lawson ([905-510-8519](tel:905-510-8519))