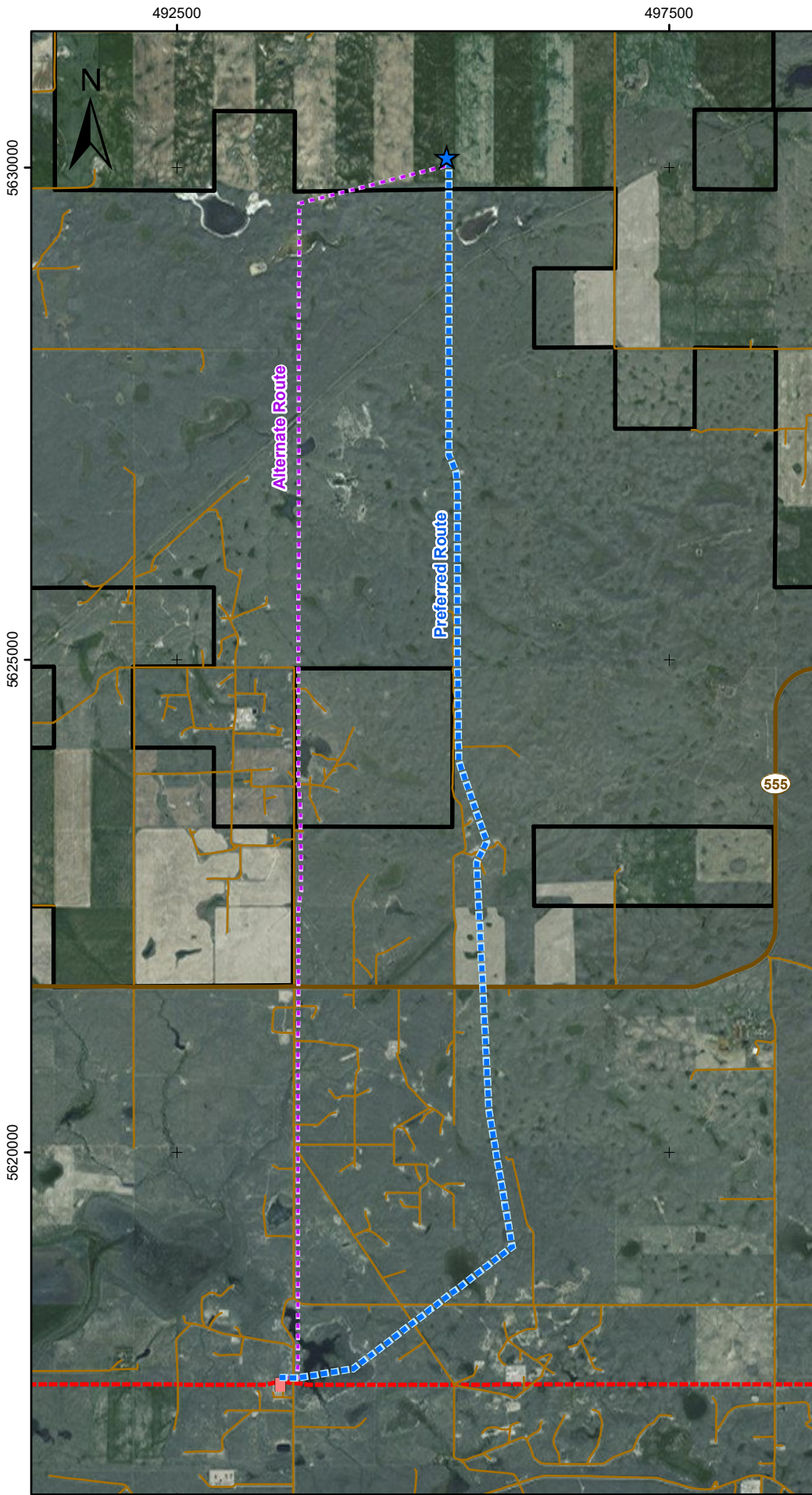


Jenner Wind Power Interconnection Project

Aerial Photo



Legend

- Jenner Wind Power Project Area
- Existing Jenner 275S Substation
- Existing 240kV Transmission Line
- Highway
- Road
- Proposed Halsbury 306S Substation
- Proposed 240 kV Transmission Route Alternatives**
 - Preferred Route
 - Alternate Route

PRE

Power Renewable Energy Corp.
Date: 17 May 2016
Map By: Joss Wind Power Inc.
Revision: 3.0
Version: FINAL

Data Sources: Roads obtained from AltaLIS © Government of Alberta. Imagery source: Esri, DigitalGlobe, GeoEye, i-cubed, Earthstar Geographics, CNES/ Airbus DS, USDA, USGS, AEX, Getmapping, Aerogrid, IGN, IGP, swisstopo, and the GIS User Community.

Coordinate System: NAD 83 UTM Zone 12N

0 1 2 3 Kilometres